



# COMMUNITY ISSUE

BRIEFING

## Environmental Resilience

Thursday, September 14

### Featuring:

- Big Thompson Watershed Coalition
- Coalition for the Poudre River Watershed
- High Plains Environmental Center
- Trees, Water, People



COMMUNITY FOUNDATION  
OF NORTHERN COLORADO





Laura Quattrini  
*Director*



# What is a Watershed?

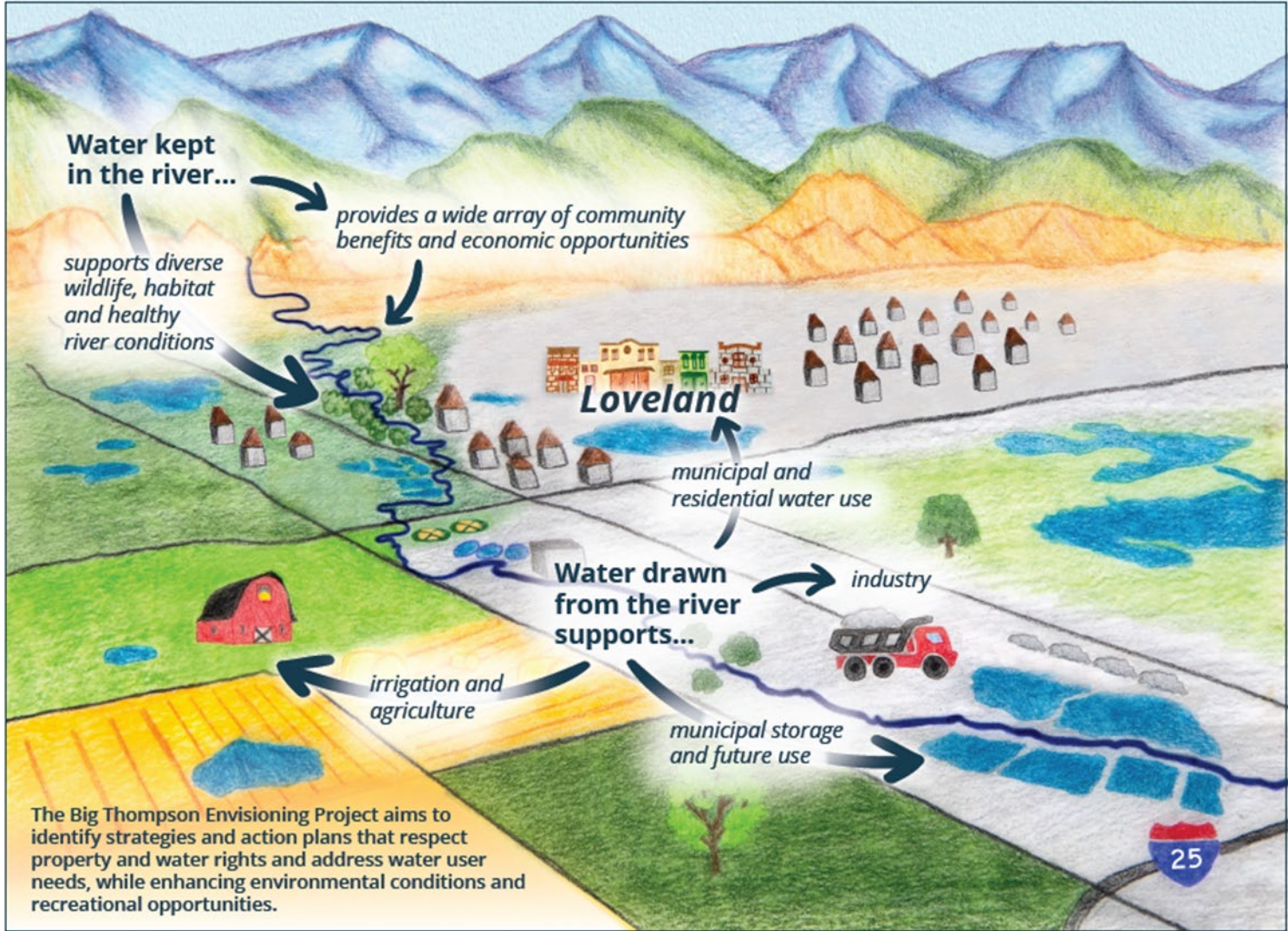
A **watershed** is a land area that channels rainfall and snowmelt to creeks, streams, and rivers and eventually to outflow points such as reservoirs, bays, and the ocean.







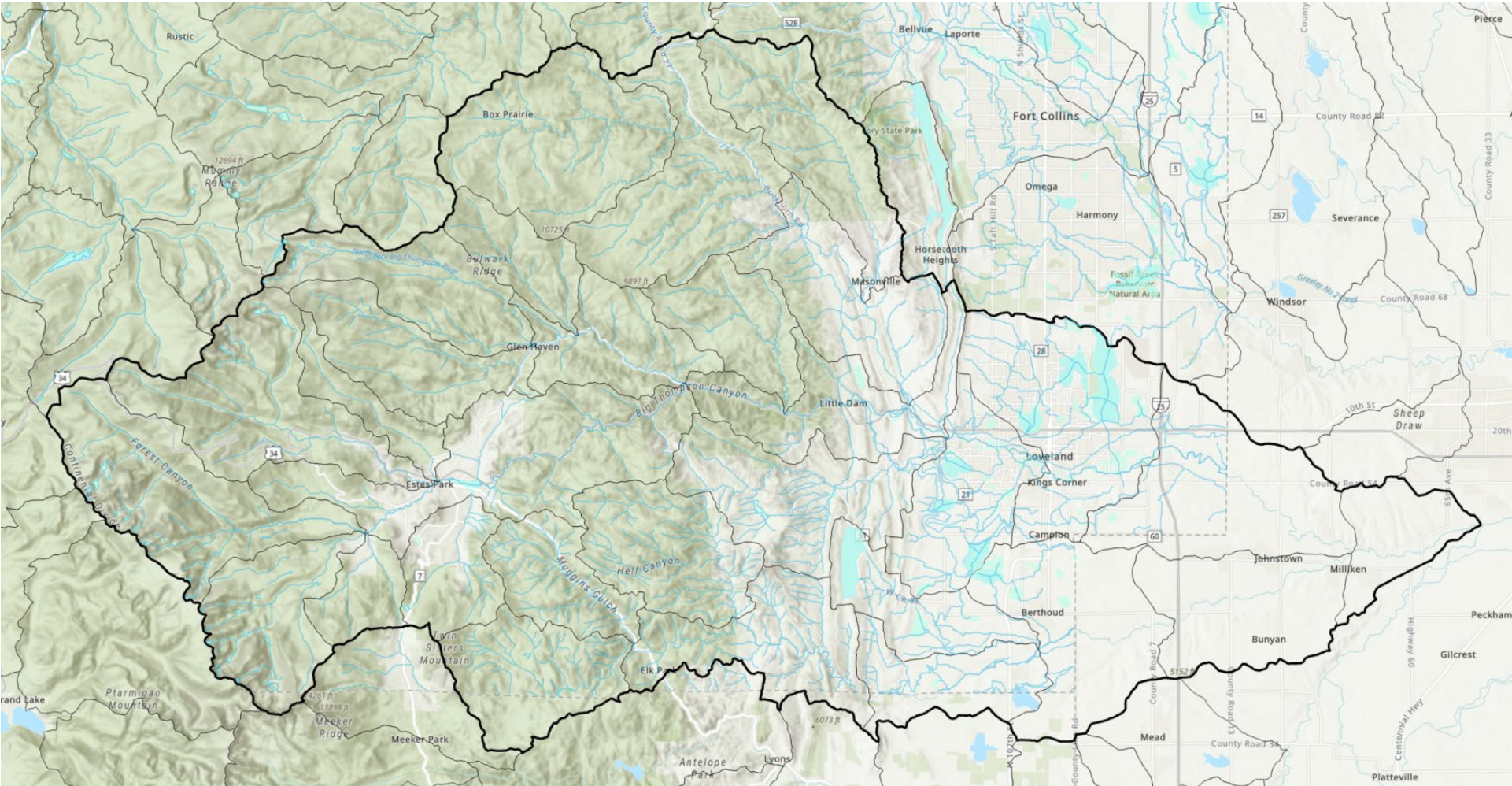
# Why are healthy watersheds important?





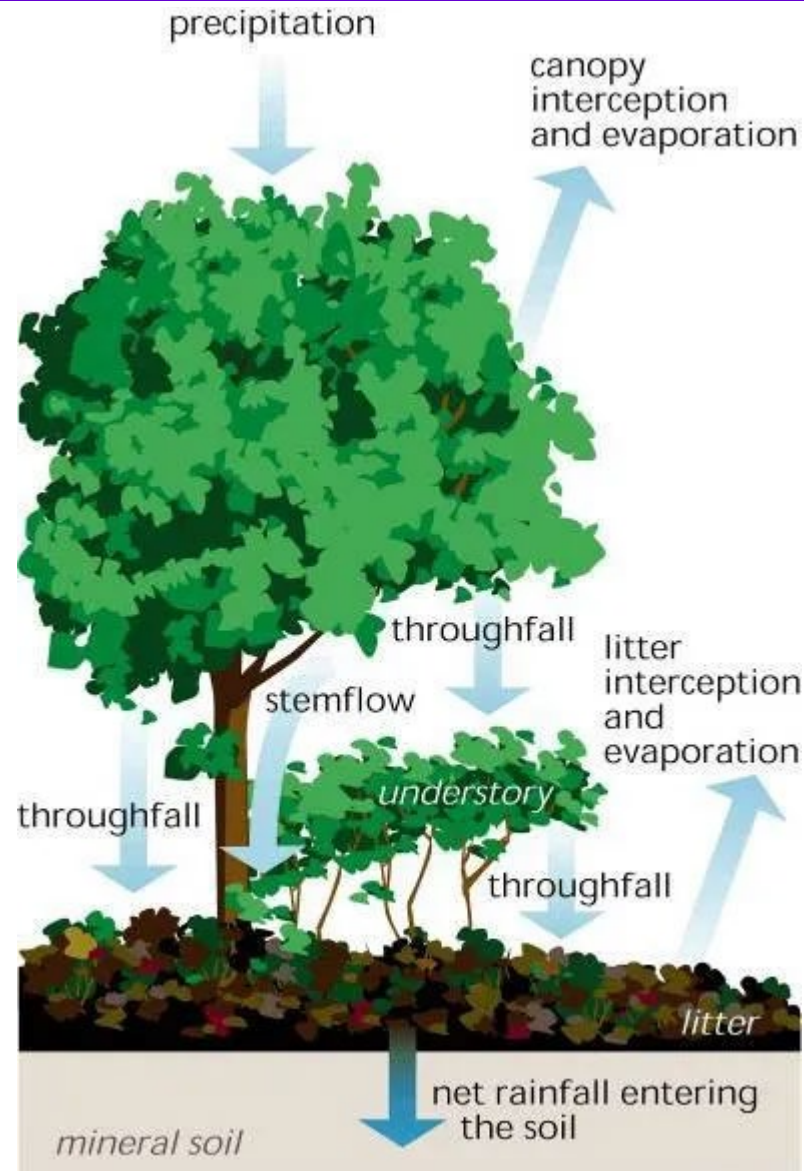


# Big Thompson Watershed





# Forested watersheds protect water







# How is BTWC helping?

Cameron Peak Fire Recovery



Wildfire Mitigation



Stream Management Plan:  
Community Engagement







# 2020 Cameron Peak Fire Impacts







# Wildfire Recovery & Restoration

**Aerial Mulching**



**Point-Mitigation**

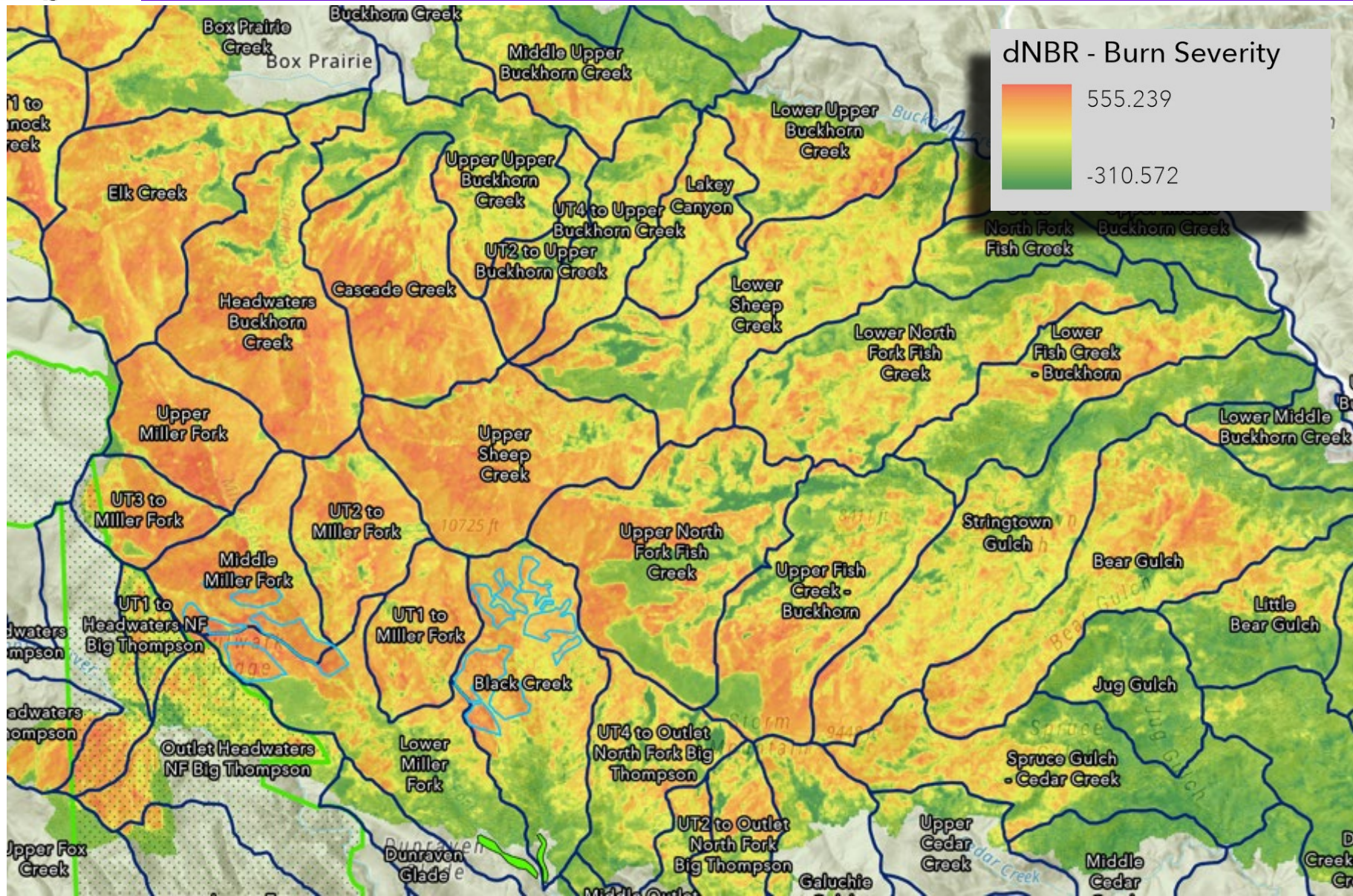


**Reforestation**





# Wildfire Recovery & Restoration







# Wildfire Recovery & Restoration

## Aerial Mulching Outcomes:

- 2021 – 753 acres (N. Fork Big T)
- 2022 – 1,166 acres (N. Fork and Upper Buckhorn)



## Point-Mitigation Outcomes:

- Stream process-based restoration projects
- Nearly 10,000 ft wattles
- Debris cleanups
- Hand seeding and mulching



## Reforestation Outcomes:

- 8,090 Ponderosa Pines planted
- 130 acres





# How is BTWC helping?

Cameron Peak Fire Recovery



Wildfire Mitigation



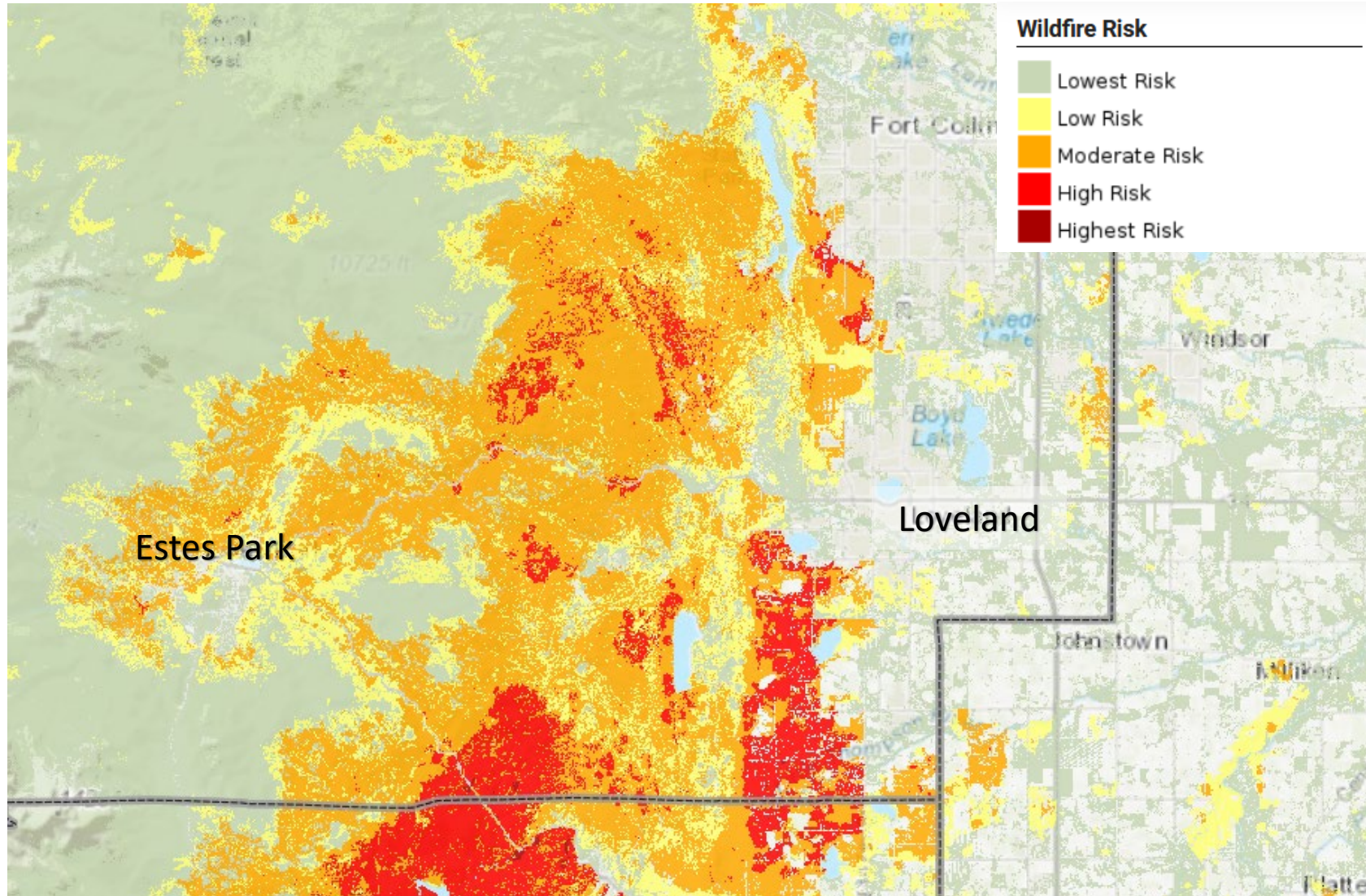
Stream Management Plan:  
Community Engagement







# Wildfire Risk & Mitigation

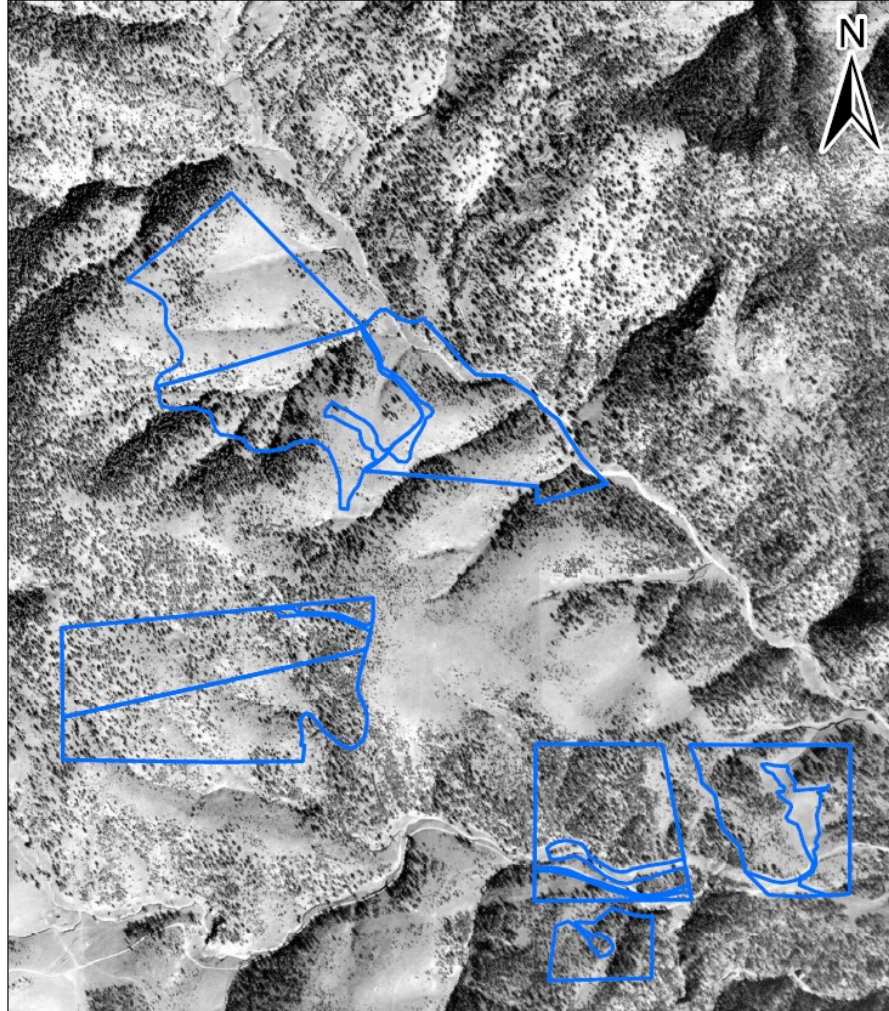






# BTWC Health Forests Program

1940 Forest Structure



2017 Forest Structure







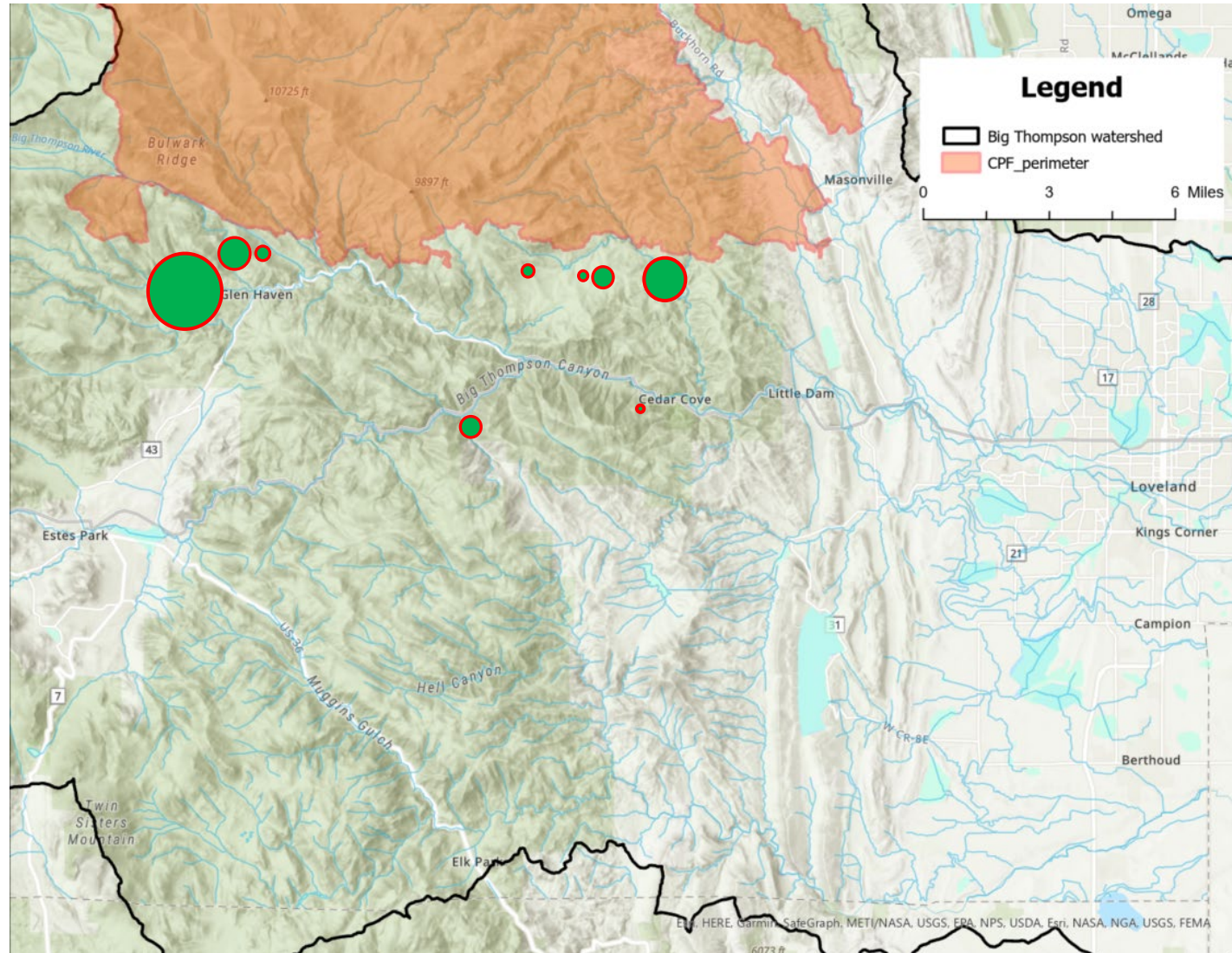
# BTWC Healthy Forests Program

## Previous Projects

- **Round Mountain – City Property**
  - 14 acres
- **Cedar Park**
  - 100 acres
- **Storm Mountain**
  - 30 acres
- **Glen Haven**
  - 25 acres

## Upcoming Projects with funding

- **Glen Haven Assoc.**
- **Waltonia**
- **Storm Mountain**







# How is BTWC helping?

Cameron Peak Fire Recovery



Wildfire Mitigation



Stream Management Plan:  
Community Engagement

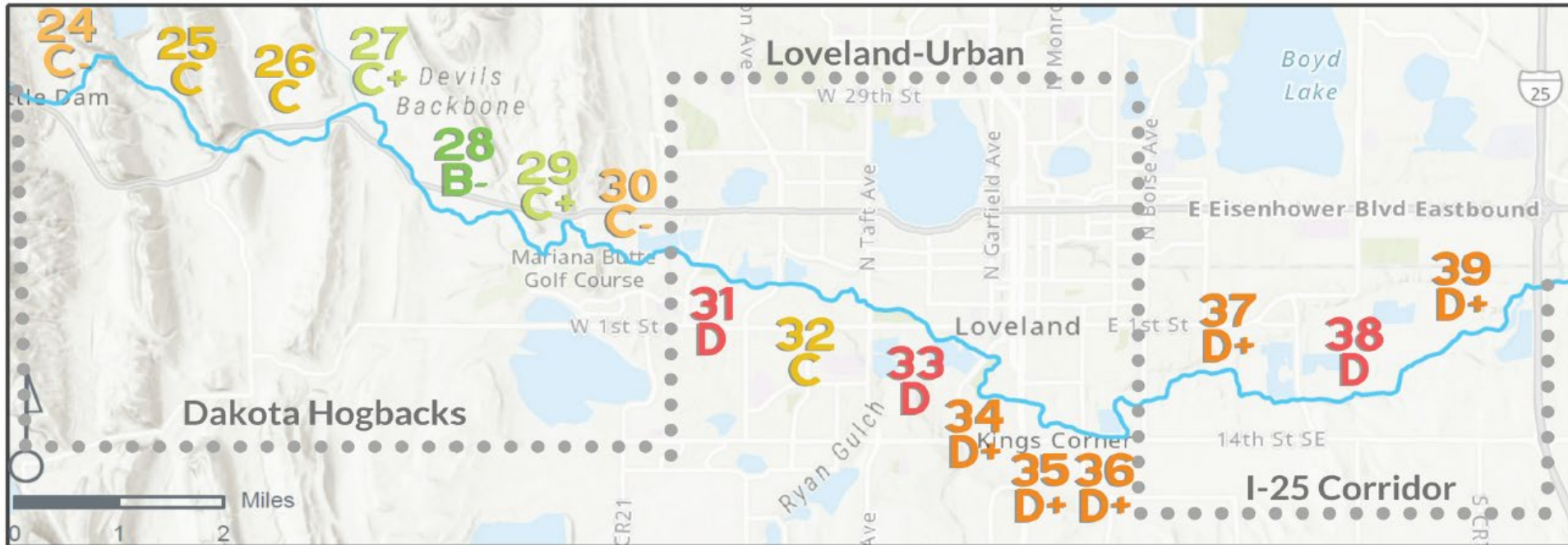






# Stream Management Plan (SMP)

## Reach Health Scores







# Priority Reaches Identified

## Community Identified Priority Reaches

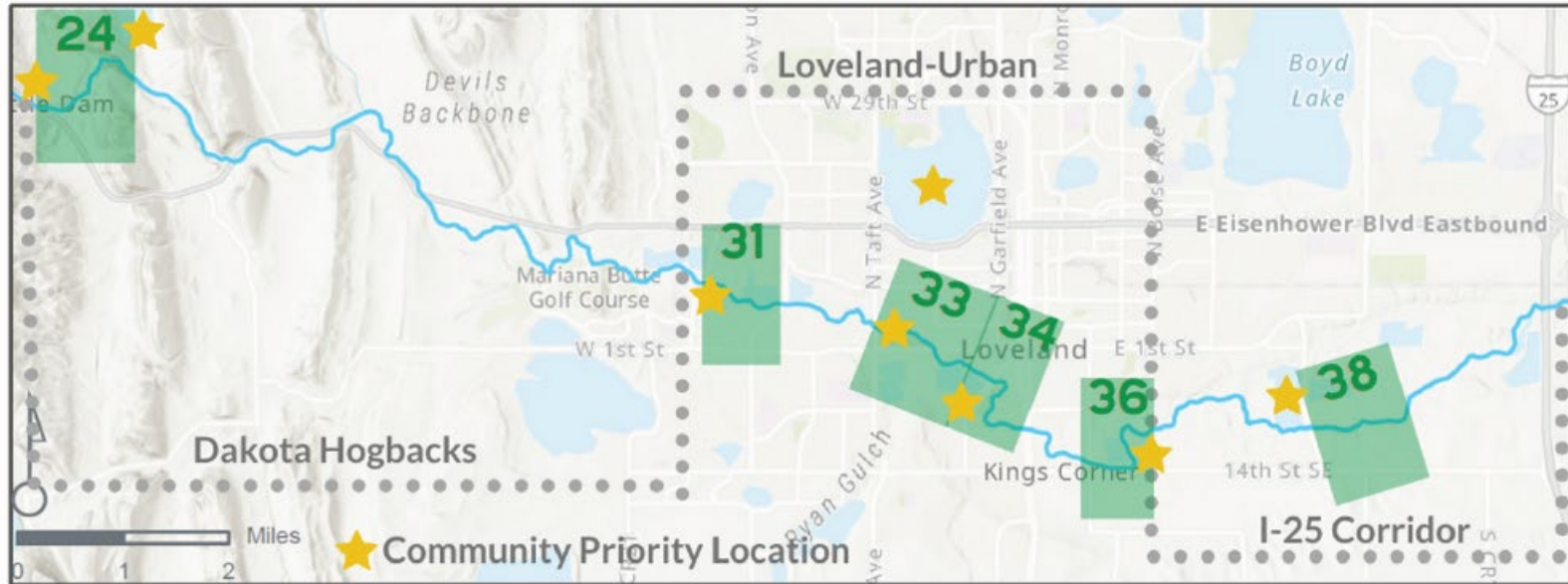


Figure 20 Community Identified priority reaches.

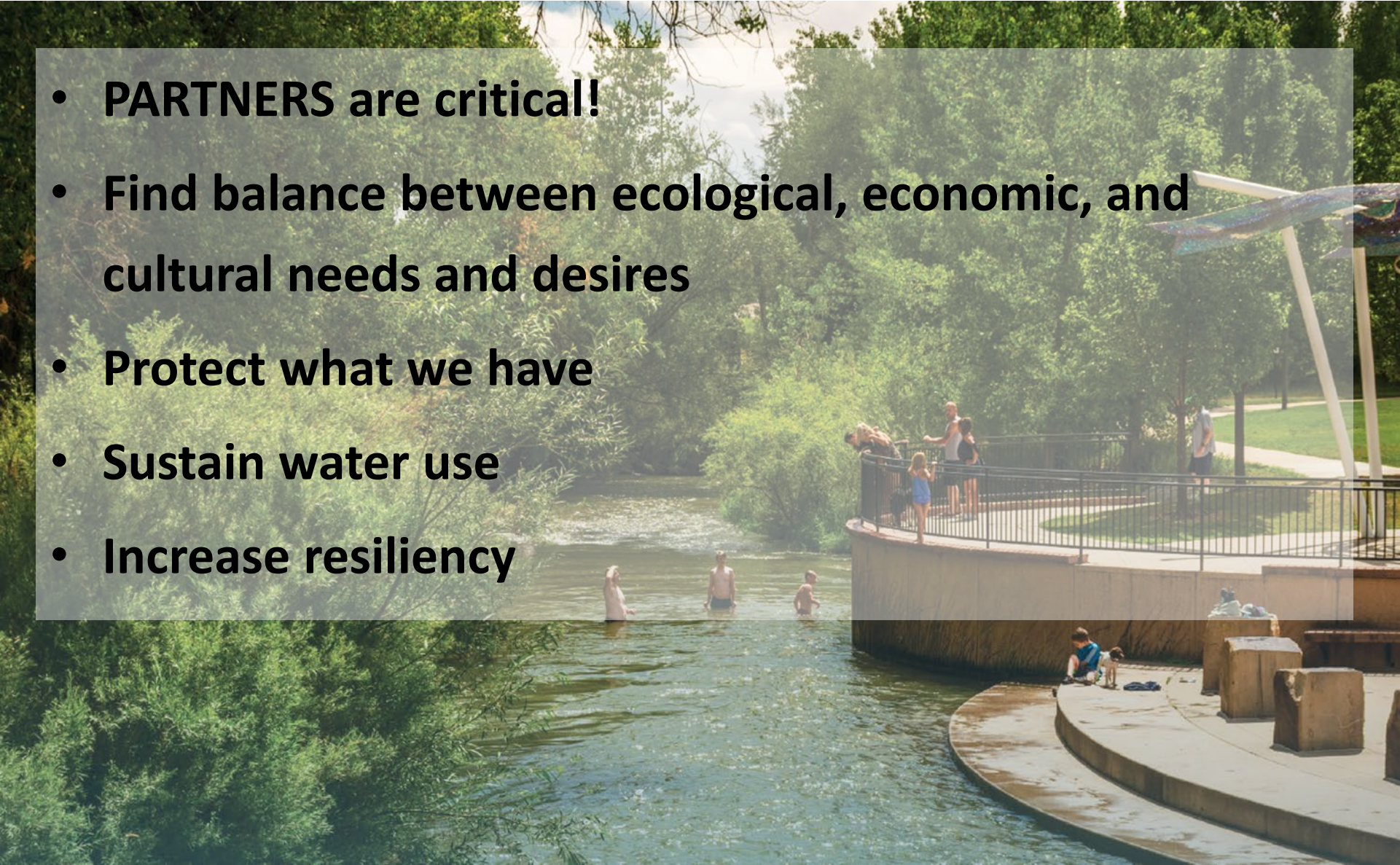
REACH NAME	REACH NUMBER	SPECIFIC AREAS OF COMMUNITY INTEREST
Sylvan Dale	24	Canyon Mouth, Green Glade Reservoir
Namaqua - Wilson	31	Namaqua Park
Taft-Railroad	33	Centennial Park, Lake Loveland
Fairgrounds Park	34	Fairgrounds Park
St. Louis-Boise	36	Boise Bend Natural Area
Kauffmans (CR 9 to Hillsborough ditch)	38	Kauffman's Reservoir





# To the Future!

- **PARTNERS** are critical!
- Find balance between ecological, economic, and cultural needs and desires
- Protect what we have
- Sustain water use
- Increase resiliency





# Thank you!



## **BIG THOMPSON WATERSHED COALITION**

[www.bigthompson.co](http://www.bigthompson.co)

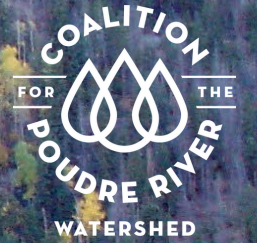
1530 N. Boise Ave, Suite 204  
Loveland, CO 80539

Laura Quattrini, Director  
[laura.quattrini@bigthompson.co](mailto:laura.quattrini@bigthompson.co)  
(970) 699-2906

Will Davis, Communications & Outreach Manager  
[will.davis@bigthompson.co](mailto:will.davis@bigthompson.co)  
(970) 800-1126

Zoe Schapira, Forestry Project Manager  
[Zoe.schapira@bigthompson.co](mailto:Zoe.schapira@bigthompson.co)  
(970) 732-2946

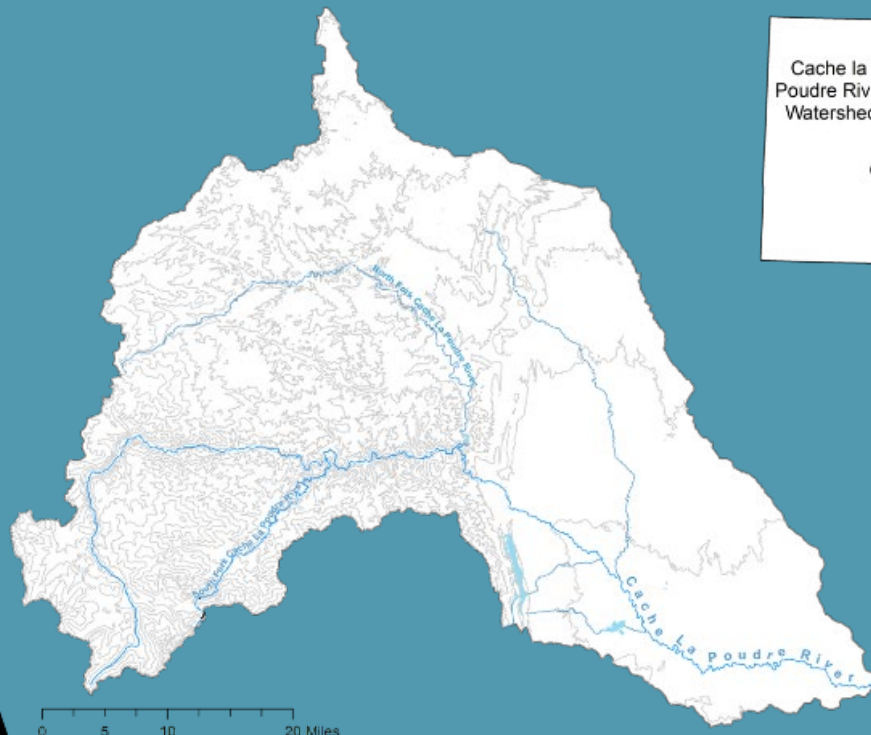




# COALITION FOR THE POUDRE RIVER WATERSHED

Hally Strevey, Executive Director





**OUR MISSION: To improve & maintain the ecological health of the Poudre River Watershed through community collaboration.**



# Our Priorities 2023-2028



## Organizational Health

Remain a thriving organization dedicated to our vision and mission.



## Forests Program

Collaboratively treat priority acres to achieve resilience.



## Rivers Program

Integrate new and existing plans to advance priority river restoration.



## Cameron Peak Fire Recovery

Wisely spend remaining funding on priority projects.



## Science & Monitoring

Ensure the long-term success of our projects through monitoring.



## Community Outreach

Advance community knowledge and awareness of the Poudre Watershed.



# Our History



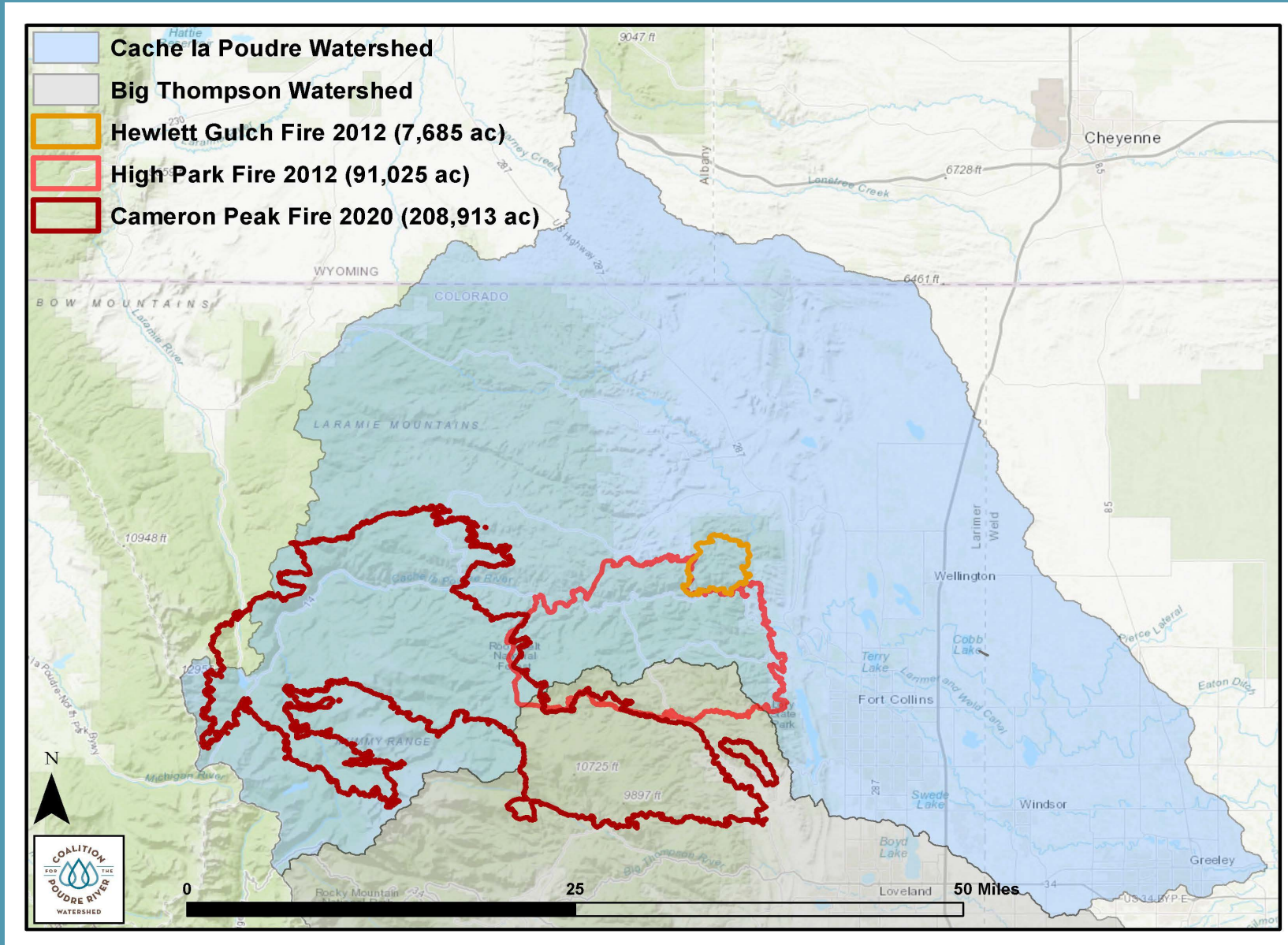
*Debris flows after the High Park Fire*

- 2012 - High Park Restoration Coalition (HPRC)
- May 2013 - Formalized as a 501c3 nonprofit

## Current Board:

- City of Fort Collins Utilities
- City of Greeley Water & Sewer
- Larimer County
- Rocky Mountain Flycasters/ Trout Unlimited
- Carestream Health
- Mighty Arrow Foundation
- Retired USFS
- Weld Trust
- Colorado Open Lands
- CSU

# WILDFIRES IN THE POUDE WATERSHED – Past 10 years





# CPF RESTORATION PROGRAM



**Aerial Mulching**



**Point Mitigation**



**Reforestation**

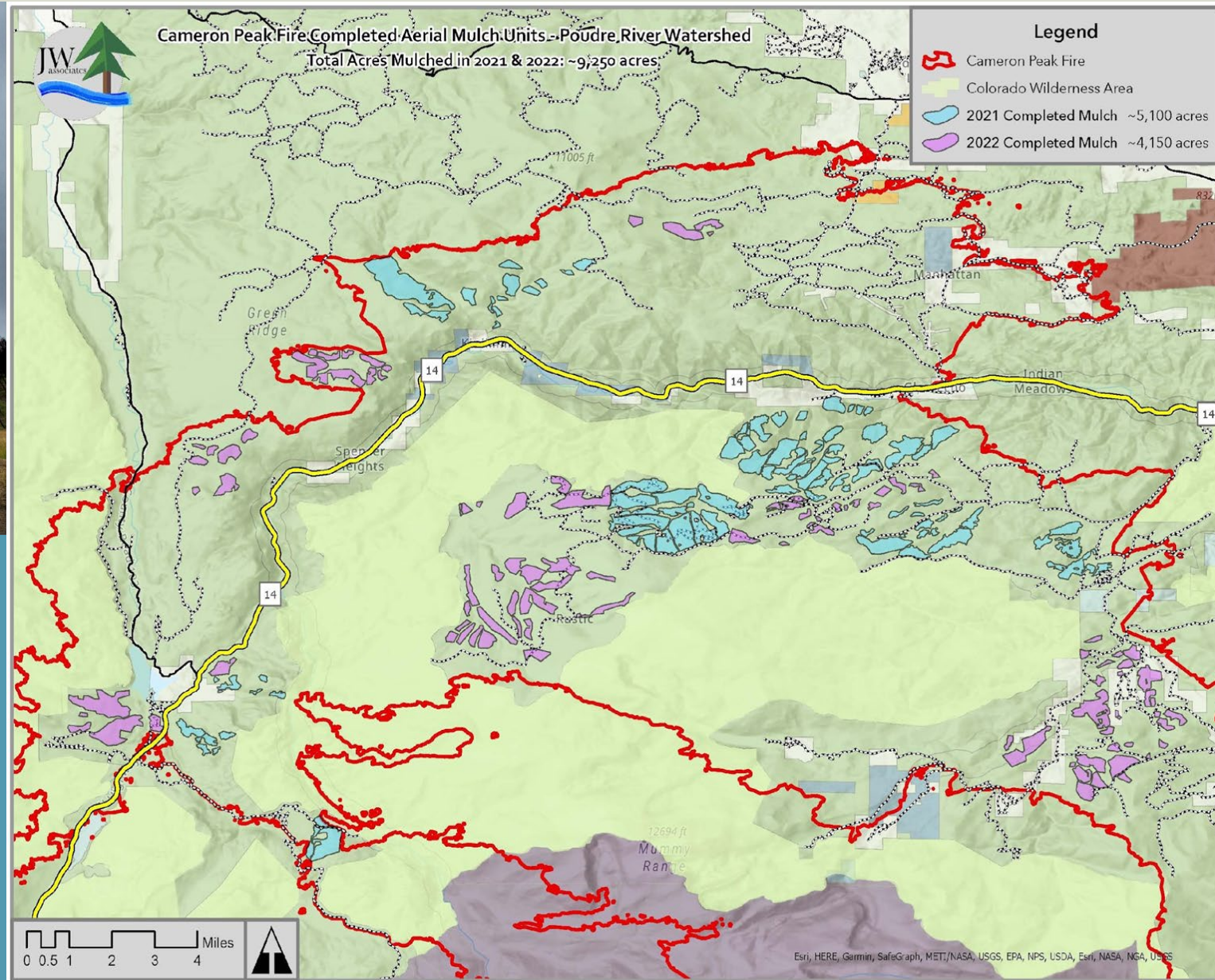


# AERIAL MULCH OVERVIEW



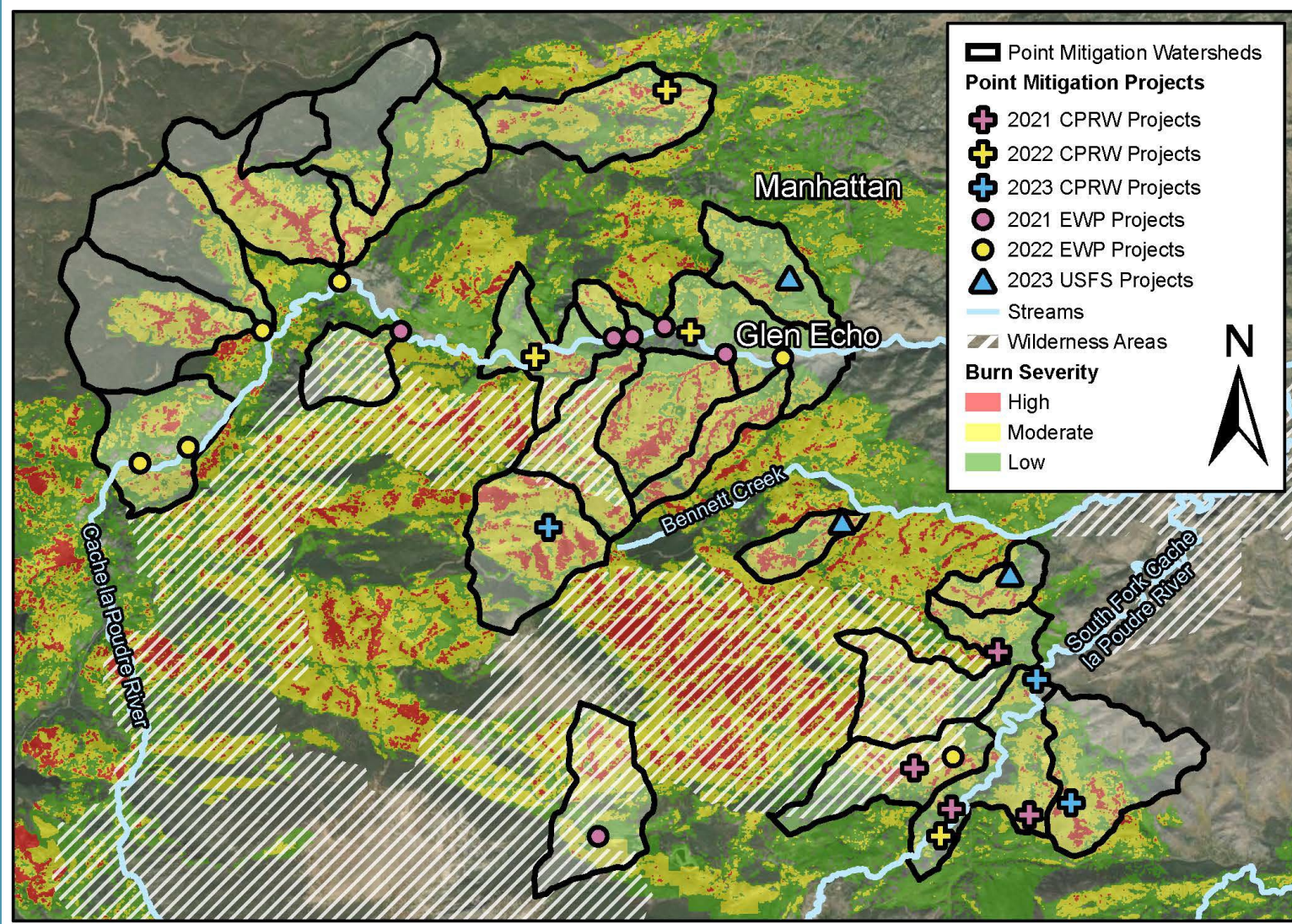
## 2021-2022 Overview

- 2021 – 5,000+ acres mulched
- 2022 – 4,100+ acres mulched
- Predominantly on USFS lands, with some state and private
- Received \$500,000 from NoCo Fire Fund for mulching





# Point Mitigation & Process-Based Restoration





Upper  
Elkhorn  
2021

Relic Beaver  
Meadow





Upper  
Elkhorn  
2021

Post- Assisted  
Log Structures  
PALS





# REFORESTATION



- \$~130,000 from NoCo Fire Fund for reforestation partners
- Focus on ponderosa pine – 135 trees/acre – using locally sourced seed
- “Climate-Smart Planting”



LARIMER COUNTY  
**CONSERVATION  
CORPS**







- Planting in moderate/high burn severity areas and double burned areas (High Park & Cameron Peak)
- **2021-2023 – more than 16,500 trees planted in the Poudre and Big Thompson Watersheds**





# Other Focus Areas

- Lower Watershed- east of I-25
  - Fish Passage, river restoration
- Community engagement
  - Mural project
- River Health Assessment Framework
- Citizen Science





# Next Steps

- Planning efforts underway for additional post-fire projects to be constructed in 2024-2025
- Continued collaborative reforestation efforts
- Revise our Upper Poudre Resiliency Watershed Plan & active stream corridor mapping
- Pairing Low Tech Process Based Restoration with wildfire mitigation work





# QUESTIONS?

[hallys@poudrewatershed.org](mailto:hallys@poudrewatershed.org)



[poudrewatershed.org](http://poudrewatershed.org)



# Impact to date

**40**

partner organizations involved

**24**

projects completed

**11,000+**

acres of aerial mulching

**\$25M+**

Federal Funds (as of 2022)

**\$11M**

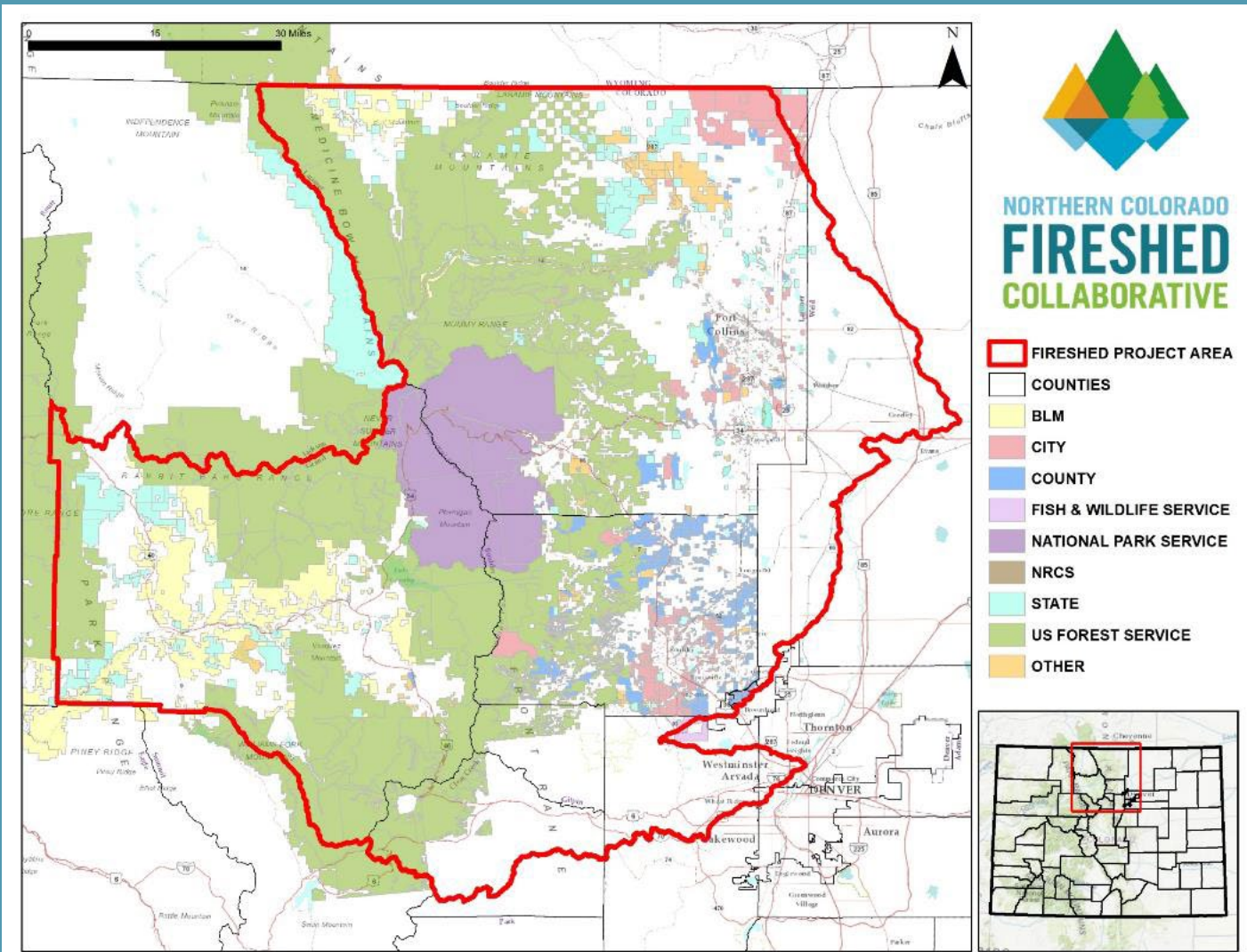
State Funds

**\$7M+**

Local & Private Funds



# NORTHERN COLORADO FIRESHED COLLABORATIVE





# HPEC/HPF Funding Model



September 14, 2023





HPEC was created by McStain and McWhinney as an independent non-profit entity in 2001

HPEC Mission: The High Plains Environmental Center works to educate communities to become replicable “living laboratories” which demonstrate restorative examples of land-stewardship, native plants, and wildlife habitat.



# HPEC/HPF non-profit structure

## High Plains Environmental Center (HPEC)

- Non-profit 501c3
- Provides public benefit in the form of education and environmental stewardship
- Manages visitor center, demonstration gardens, trails and open space

## High Plain Foundation (HPF)

- Non-profit 501a -funding organization
- Owns 76-acre property surrounding Houts Reservoir and Equalizer Lake in Loveland, CO
- Owns buildings, and improvements on property
- Holds major assets including endowment fund at the Community Foundation of Northern Colorado



## Foundational Agreements

### **HPEC/HPF Established 2001**

- Environmental Fees
- Transfer fees
- Land Dedication
- Surface Rights

### **HPEC Commitments**

- Management of 76-acre park (Houts & Equalizer)
- Provide public education in environmental stewardship
- Include Centerra residents in HPEC activities & programs

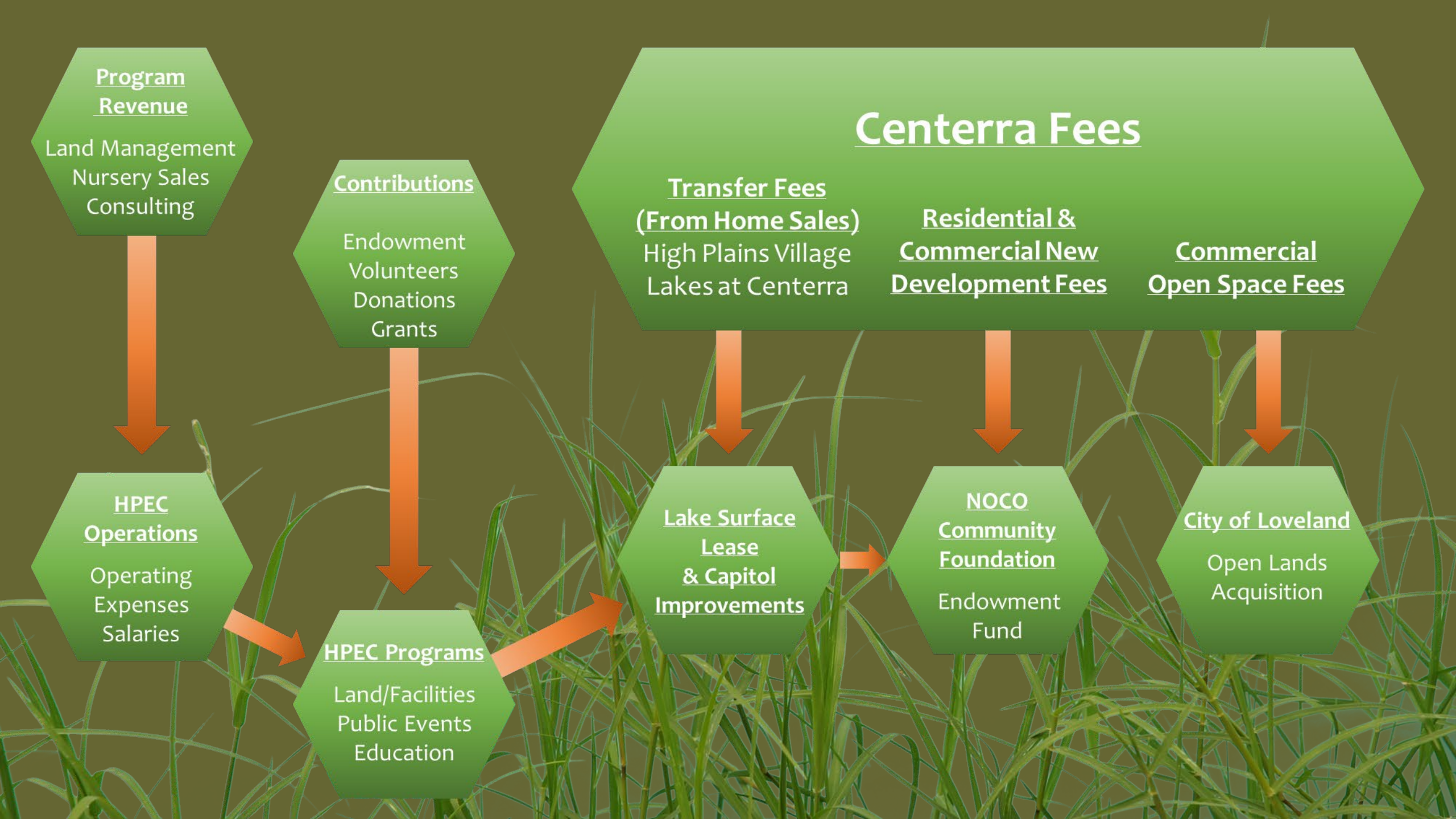
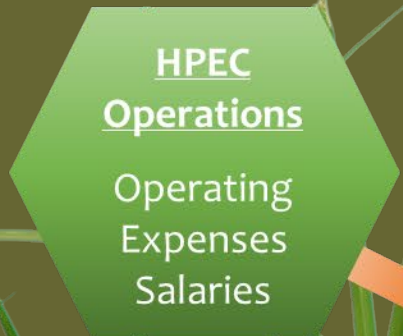
## HPEC Accomplishments

- Visitor Center and Demonstration Gardens Built in 2017 at a cost of 1.2 million dollars
- Land Management Services: Centerra and beyond
- Horticultural Services: Chapungu (Showcase Garden Award), Pioneer in Water Conservation/Habitat Landscaping Practices, Expanding Plant Palette & Habitat Restoration
- 15 years Participation in the Centerra DRC
- Outreach & Education: Tours, Lectures & Workshops, Suburbitat Book, News Articles, Videos, Public Programming
- NWF Wildlife Habitat Community Certification

## Long Term Goals

- Expand Consultation, Management, & Design Services for Front Range and beyond.
- **HPEC Mission:**  
“The High Plains Environmental Center works to **educate communities to become replicable “living laboratories” which demonstrate restorative examples of land- stewardship, native plants, and wildlife habitat.**”









*Trees, Water & People respectfully acknowledges that our office in Fort Collins, CO sits on the living homelands of the Arapaho (hinono'eino' biito'owu') Ute (Núu-agma-tuvu-pu), Cheyenne (Tsésthó'e) and other Native groups who still reside and depend on this land today.*





*For 25 years, Trees, Water & People, has worked to improve lives by helping communities to protect, conserve, and manage the natural resources on which their long-term well-being depends.*







# OUR PROGRAMS

---

Support Indigenous and marginalized communities in the preservation of their lands, natural resources and cultural lifeways.

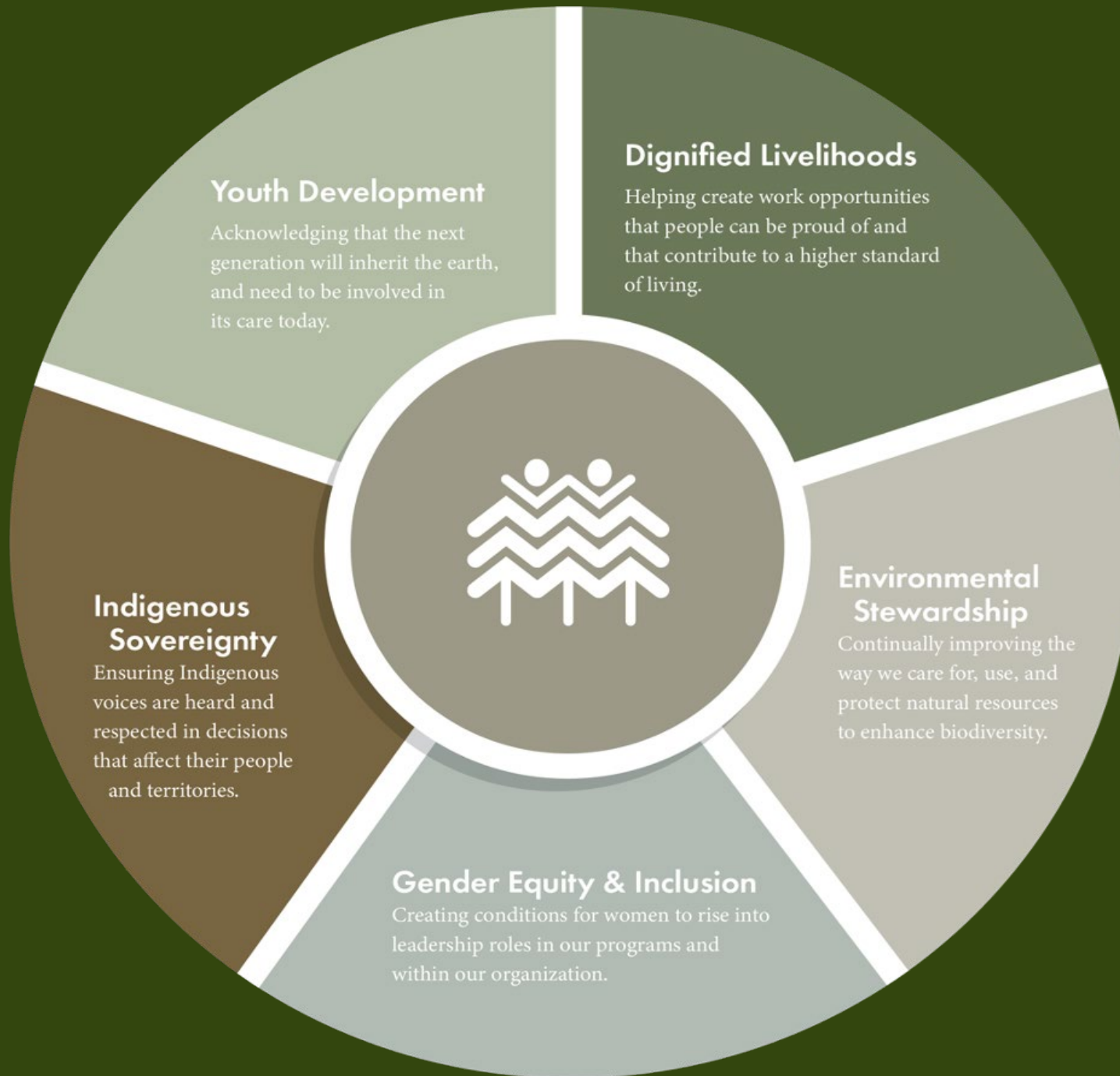
**Central America Program:** We work with local organizations to create the conditions for families to prosper in ways that regenerate and heal the land in Central America.

**Indigenous Lands Program:** Exists to build the capacity of Native American Tribes in the Western U.S. to manage their natural resources through conservation planning and restoration activities on sovereign Tribal and ancestral lands.



# PRIORITIES

---







# LOCAL EFFORTS

---

- Cameron Peak Fire restoration.
- Colorado State University: alumni staff, internship and fellowship opportunities.
- Colores de la Comunidad mural in Old Town.
- New mural at Front Range Village: Unveiling 10/09.

RSVP:





# BISON IN THE LARAMIE FOOTHILLS

---

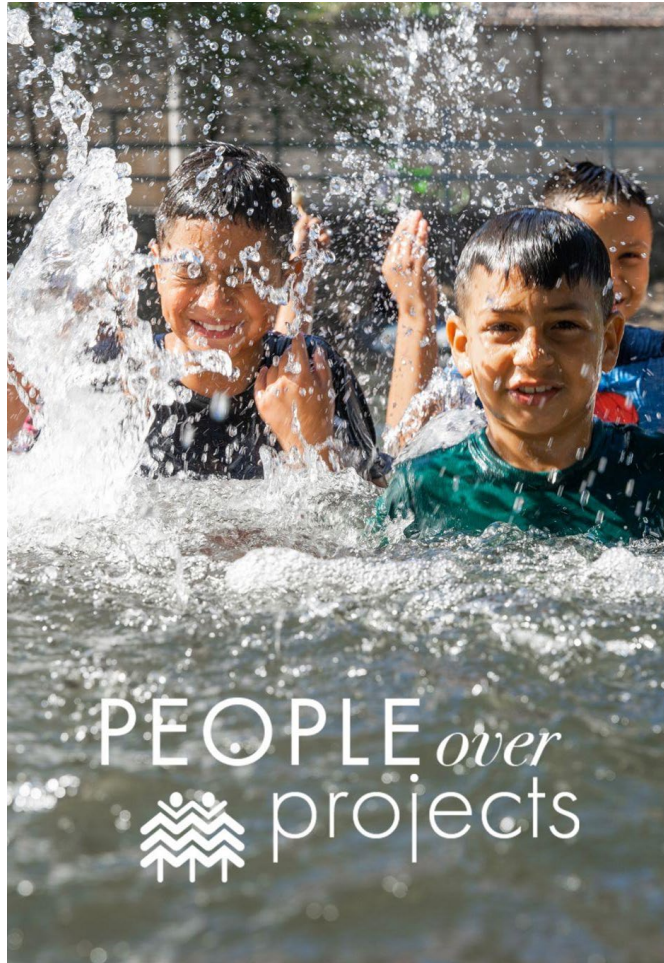


- Laramie Foothills Bison Conservation Herd (LFBCH), Native American Cultural Center (NACC) and TWP collaborating.
- Supporting bison's cultural importance to Native American Tribes and their ecological importance to grassland ecosystems of the West.
- Developing work-study programs that engages Native American youth.



# WHERE WE INVEST

---



- We fund community-led projects in underserved communities in Central America and on US Tribal lands on the front lines of deforestation, urbanization, land degradation and climate disasters.
- We only go where we are invited.
- We invest in relationships: [People over Projects.](#)



# EXPENSES - by location

- Honduras - 26.35%
- Colorado/Local - 25.30%
- Guatemala - 17.43%
- Fundraising - 11.83%
- Management & General - 7.84%
- El Salvador - 5.56%
- South Dakota - 4.74%
- New Mexico - 0.95%





# Trust-Based Philanthropy

---

*“A sector in which there is mutual accountability between funders and nonprofits, and wherein philanthropic systems and structures reflect the needs and dreams of communities. To get there, funders are working to change the power dynamics and structural barriers that too often get in the way of nonprofits achieving their intended impact.” - [trustbasedphilanthropy.org](http://trustbasedphilanthropy.org)*

- Unrestricted, multi-year , flexible funding
- Streamlined reporting/relief of burdens in funding
- Local empowerment/control of funds
- Community-led goals





*“Although they comprise less than 5% of the world population, Indigenous peoples protect 80% of the Earth’s biodiversity.” (World Bank)*



years helping people and the planet

TREES, WATER & PEOPLE

Thank You

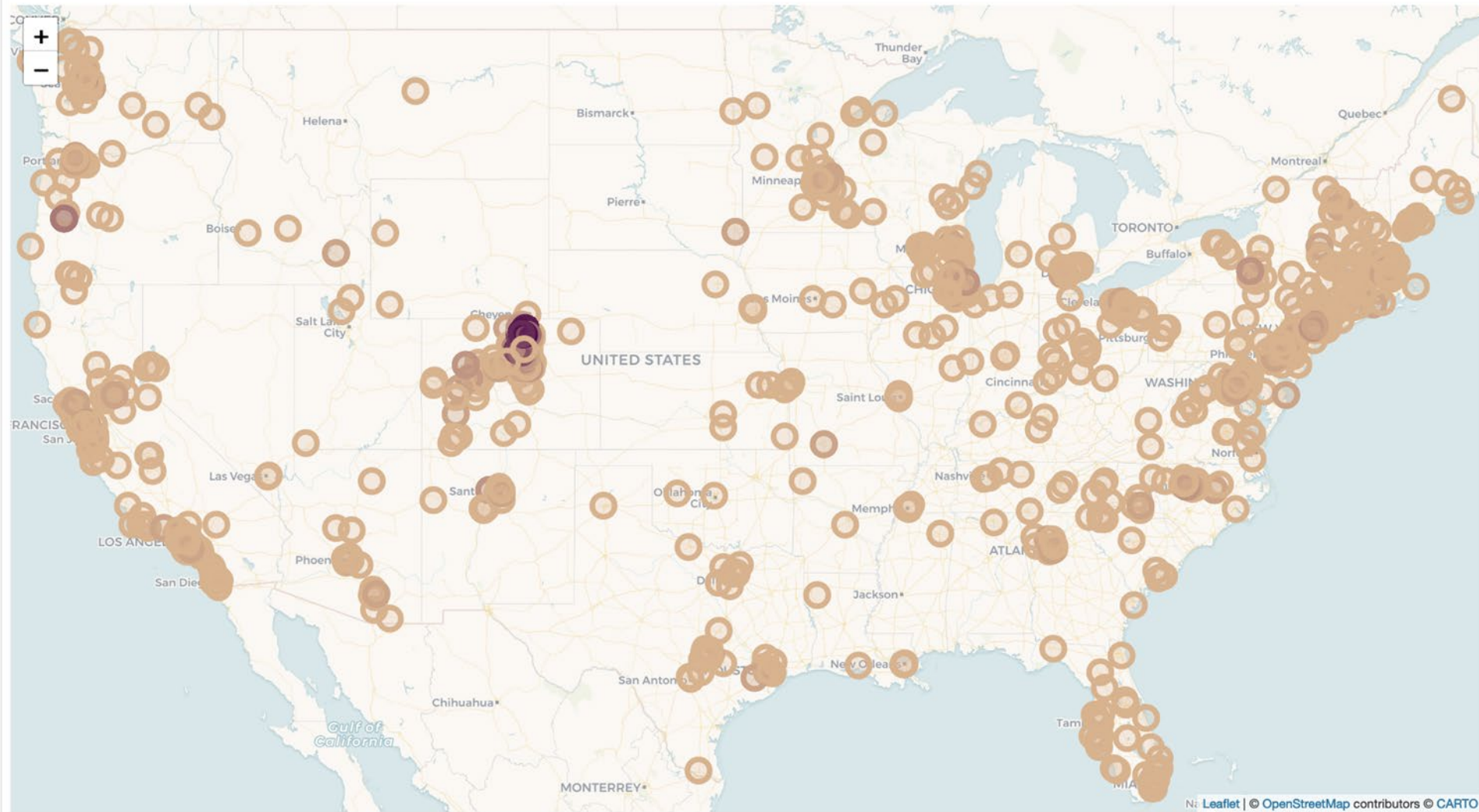


633 Remington Street, Fort Collins Colorado 80524 | [treeswaterpeople.org](https://treeswaterpeople.org)



US Donors, by Zip Code

International Donors



**Donors are mapped via their zip code only**, not their street address, which is why you will see multiple dots for some cities (like Fort Collins). *Note: Map and table include all* Darker circles represent a greater number of donors present in that specific zip code. Ask your Salesforce Administrator if you'd like a donor list *donors with at least one gift This, Last, or 2FY Ago.*



# REVENUE

Foundations - 46.39%

Public Support - 40.9%

Corporate - 7.39%

Fees for Services - 3.75%

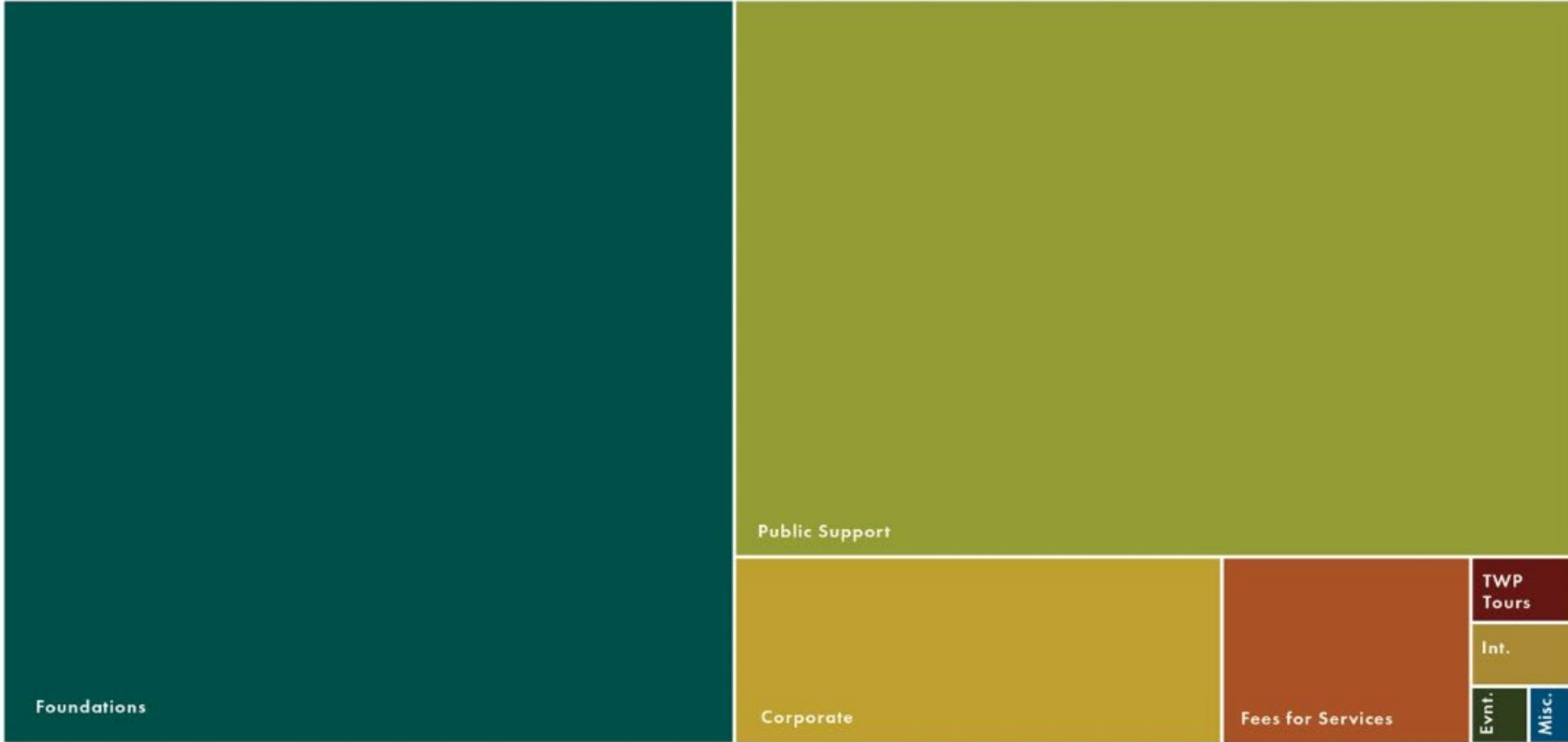
TWP Tours - 0.54%

Interest Income - 0.52%

Events - 0.29%

Misc. Income - 0.22%

Endowments - -0.07%





— QUESTIONS?





# COMMUNITY ISSUE

## BRIEFING

Next Month:

## Arts and Cultural Experiences

Thursday, October 12



COMMUNITY FOUNDATION  
OF NORTHERN COLORADO



# Introducing a new fund portal for fund holders

Contact [DonorServices@NoCoFoundation.org](mailto:DonorServices@NoCoFoundation.org) with any questions

**YOUR PORTAL HAS ARRIVED**

Creating Impact. Leaving Legacy.

Improved functionality • Easy-to-use interface • More efficient processes

**COMMUNITY FOUNDATION OF NORTHERN COLORADO**