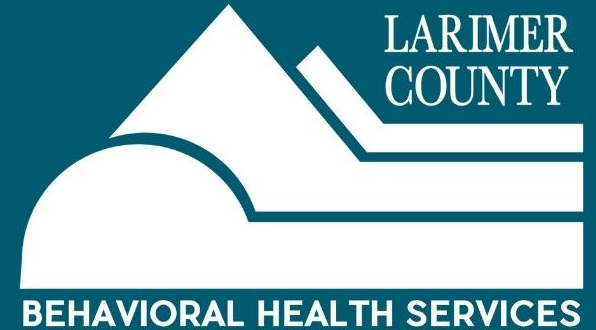


Larimer County Behavioral Health Services



About BHS



2018: Larimer County voters passed a **20-year ballot initiative** that dedicates a 0.25% sales-and-use tax (\$.25 on \$100) for behavioral health purposes.

BHS utilizes three funding pathways to invest back into the community.

- 1 Behavioral Health Services at Longview Campus**
- 2 Impact Fund Grant Program**
- 3 Bridge Fund (Future Initiative)**



LARIMER
COUNTY

Behavioral Health Services at

LONGVIEW

CAMPUS

The Longview Campus



- 40-acre county owned, behavioral health campus
- Situated on the northwest corner of Taft Hill and Trilby Roads
- Acute Care, the first building, will address a critical gap in crisis services including withdrawal management and crisis stabilization.
- The next building planned is Adolescent Care - anticipated completion in 2025



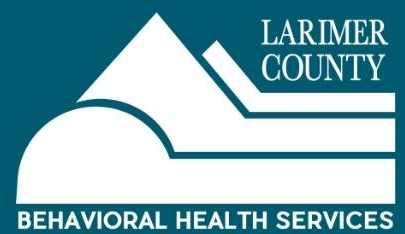
LARIMER
COUNTY

Behavioral Health Services at
LONGVIEW
ACUTE CARE



Operated by SummitStone Health Partners

Acute Care



Upon opening, SummitStone Health Partners will provide the following services:

- Behavioral Health Urgent Care: Available 24/7
- Care Coordination
- Substance Use Treatment with Medications
- Withdrawal Management
- Crisis Stabilization Unit (CSU)
- Onsite pharmacy and lab



Future Phases: Based on community need.

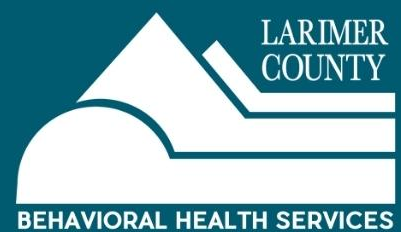
- Short-term intensive residential treatment (IRT) - Short-term residential program for clients focused on recovery.
- Opioid Treatment Program (OTP)
- Behavioral Health Institute / Center of Excellence for Training and Professional Development
- Expansion of existing services

Acute Care



Operated by SummitStone Health Partners

Acute Care



Operated by SummitStone Health Partners



LARIMER
COUNTY

Behavioral Health Services at **LONGVIEW** ADOLESCENT CARE



Adolescent Care



- **Blended Funding**
 - BHS Funding & ARPA Funding

- **Adolescent Care**
 - Anticipated Opening: 2025
 - Outpatient and Respite Services
 - Contracted Provider TBD



IMPACT FUND GRANT PROGRAM



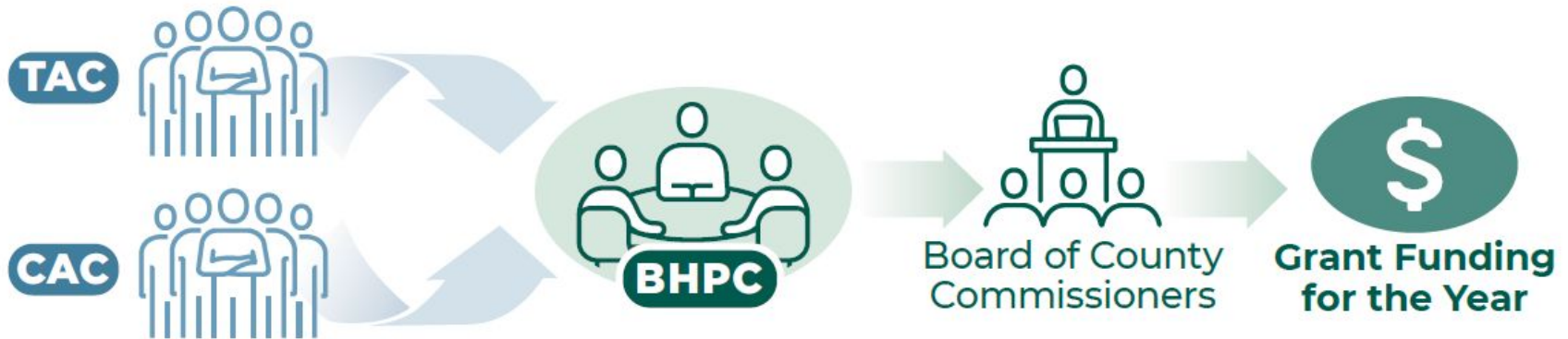
Investing in programs that serve the behavioral health needs of our community

Advisory Groups

Behavioral Health Policy Council (BHPC) - Elected officials, At-Large Members, and a Commissioner Liaison

Technical Advisory Committee (TAC) - Professional in the field of behavioral health

Consumer Advisory Committee (CAC) - Individuals with lived experience navigating behavioral health systems



Funding Priorities



Access & Affordability



Care Coordination & System Integration



Early Identification & Intervention



Stigma Reduction & Public Awareness

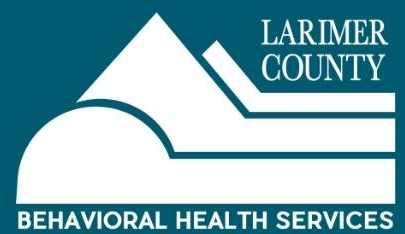


Quality Care



Prevention

Impact Fund



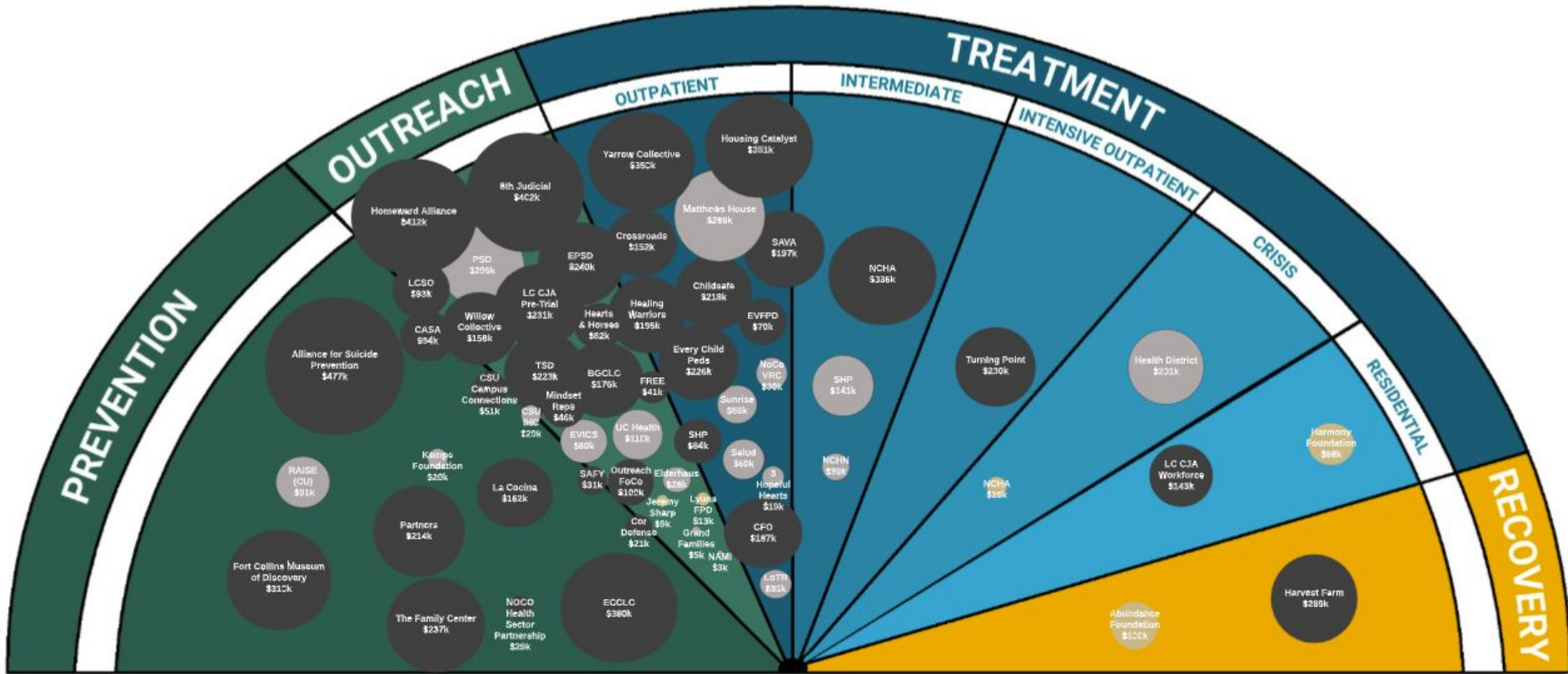
TOTAL GRANTS

- 152 Grant Awards
- 60+ Organizations
- Total Funding \$8,902,243

ANNUAL GRANT FUNDING

- 2019: \$1 million = 29 grants
- 2020: \$2.5 million = 43 grants
- 2021: \$2.525 million = 38 grants
- 2022: \$2.876 million = 42 grants

2022



The Impact Fund grant funding investment portfolio is diversified across different types of organizations in order to address the various behavioral health programming needed throughout the County.

Bridge Fund



Future initiative designed to help address barriers to care.
Programming may include:

- Client Financial Aid
- Transportation
- Rural Behavioral Health
- School Based Behavioral Health
- Mobile Behavioral Health

Stay



[Larimer.gov/behavioralhealth](https://larimer.gov/behavioralhealth)



bhs@larimer.org